

World Telecom Sites

2300 5TH AVENUE, SUITE 131
VERO BEACH, FL 32960

PROJECT INFORMATION:

SITE NAME
**GUNNISON COLORADO
KVLE-FM
COMMUNICATIONS TOWER**
1445 STATE HIGHWAY 135
GUNNISON, CO 81230



1250 N. ARLINGTON HEIGHTS RD.
SUITE 500,
ITASCA, IL 60143
630.647.1400

REV: DATE: DESCRIPTION: BY:

REV	DATE	DESCRIPTION	BY
A	07/25/13	CD REVIEW	SMK
0	07/26/13	CD ISSUE	SMK
△	10/09/13	CC #1	SMK

PLANS PREPARED BY:

CSAi

CHARLES STECKLY ARCHITECTURE, Inc.
ARCHITECTURE - PLANNING - DESIGN
5935 SOUTH ZANG STREET, SUITE 280
LITTLETON, COLORADO 80127
OFFICE: 303.932.9974
FAX: 303.932.6561

LICENSURE No:

DRAWN BY: CHK: APV:

SMK TN CS

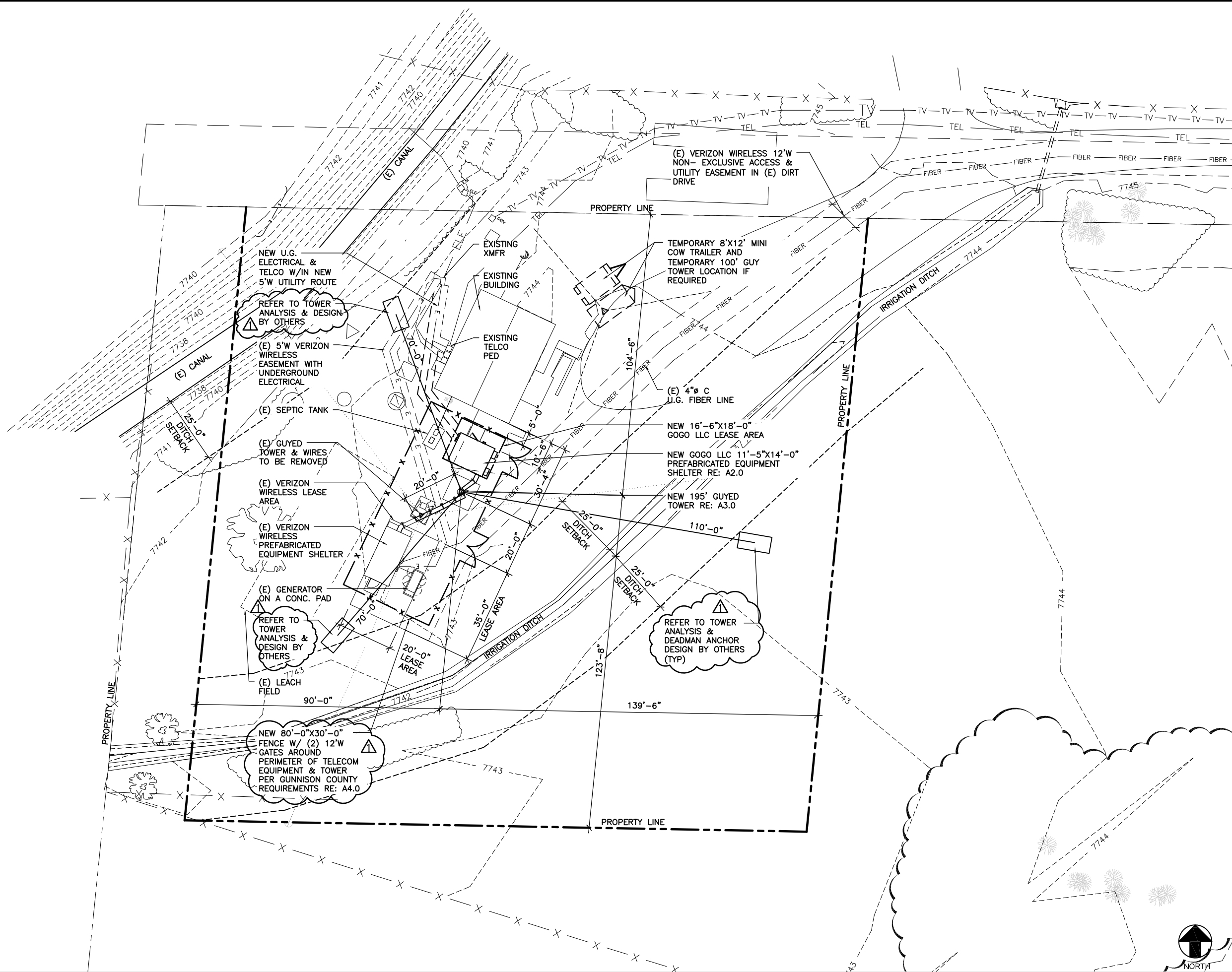
CONSULTANT:

SHEET TITLE:

SITE PLAN

SHEET NUMBER:

A1.0



SCALE: 16' 8' 0 16'
1/16" = 1'-0"

World Telecom Sites

2300 5TH AVENUE, SUITE 131
VERO BEACH, FL 32960

PROJECT INFORMATION:

SITE NAME
**GUNNISON COLORADO
KVLE-FM
COMMUNICATIONS TOWER**
1445 STATE HIGHWAY 135
GUNNISON, CO 81230



1250 N. ARLINGTON HEIGHTS RD.
SUITE 500,
ITASCA, IL 60143
630.647.1400

REV: DATE: DESCRIPTION: BY:

REV	DATE	DESCRIPTION	BY
A	07/25/13	CD REVIEW	SMK
0	07/26/13	CD ISSUE	SMK
△	10/09/13	CC #1	SMK

PLANS PREPARED BY:

CSAi
CHARLES STECKLY ARCHITECTURE, Inc.
ARCHITECTURE - PLANNING - DESIGN
5935 SOUTH ZANG STREET, SUITE 280
LITTLETON, COLORADO 80127
OFFICE: 303.932.9974
FAX: 303.932.6561

LICENSURE No:

DRAWN BY: CHK: APV:

SMK	TN	CS
-----	----	----

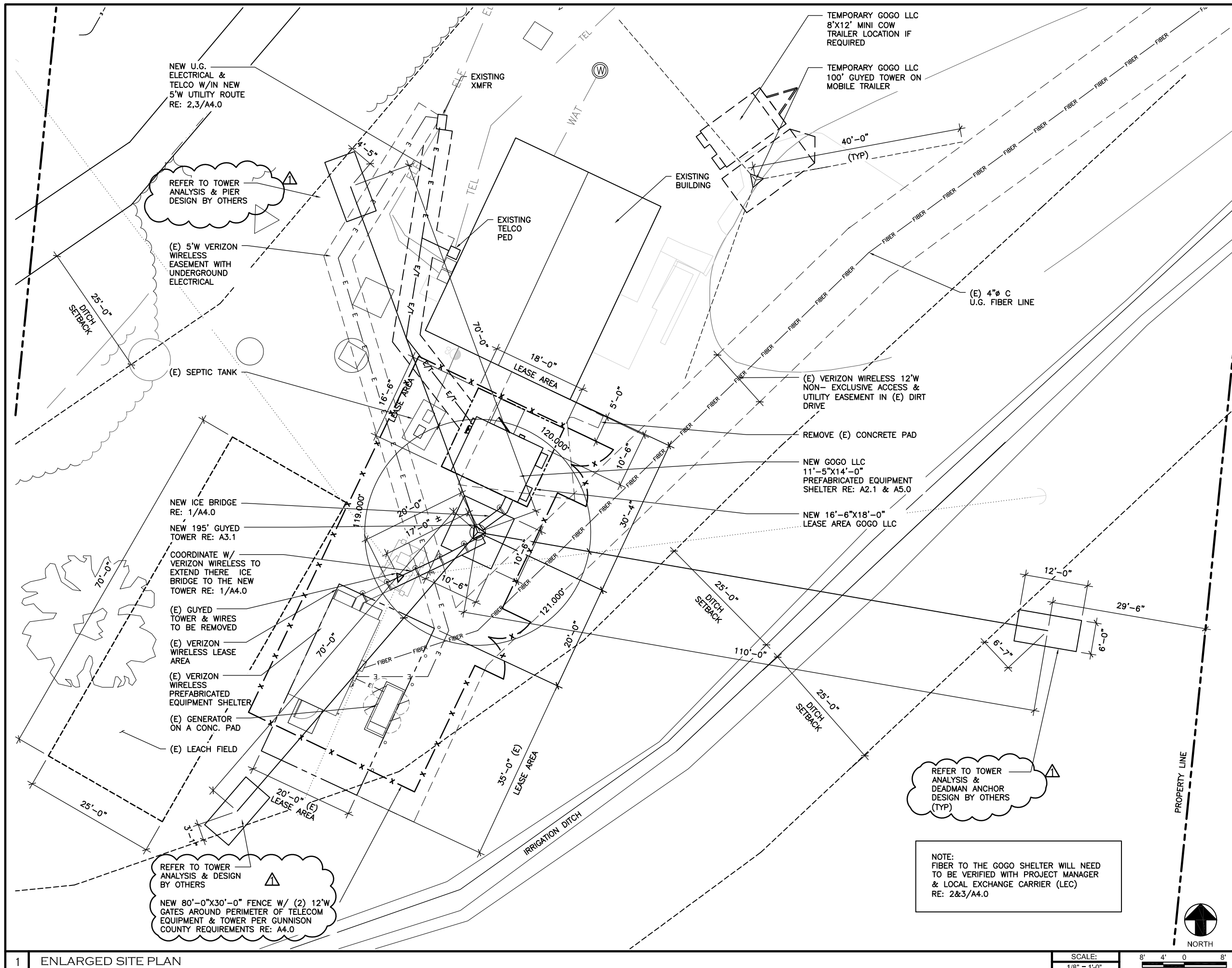
CONSULTANT:

SHEET TITLE:

**ENLARGED
SITE PLAN**

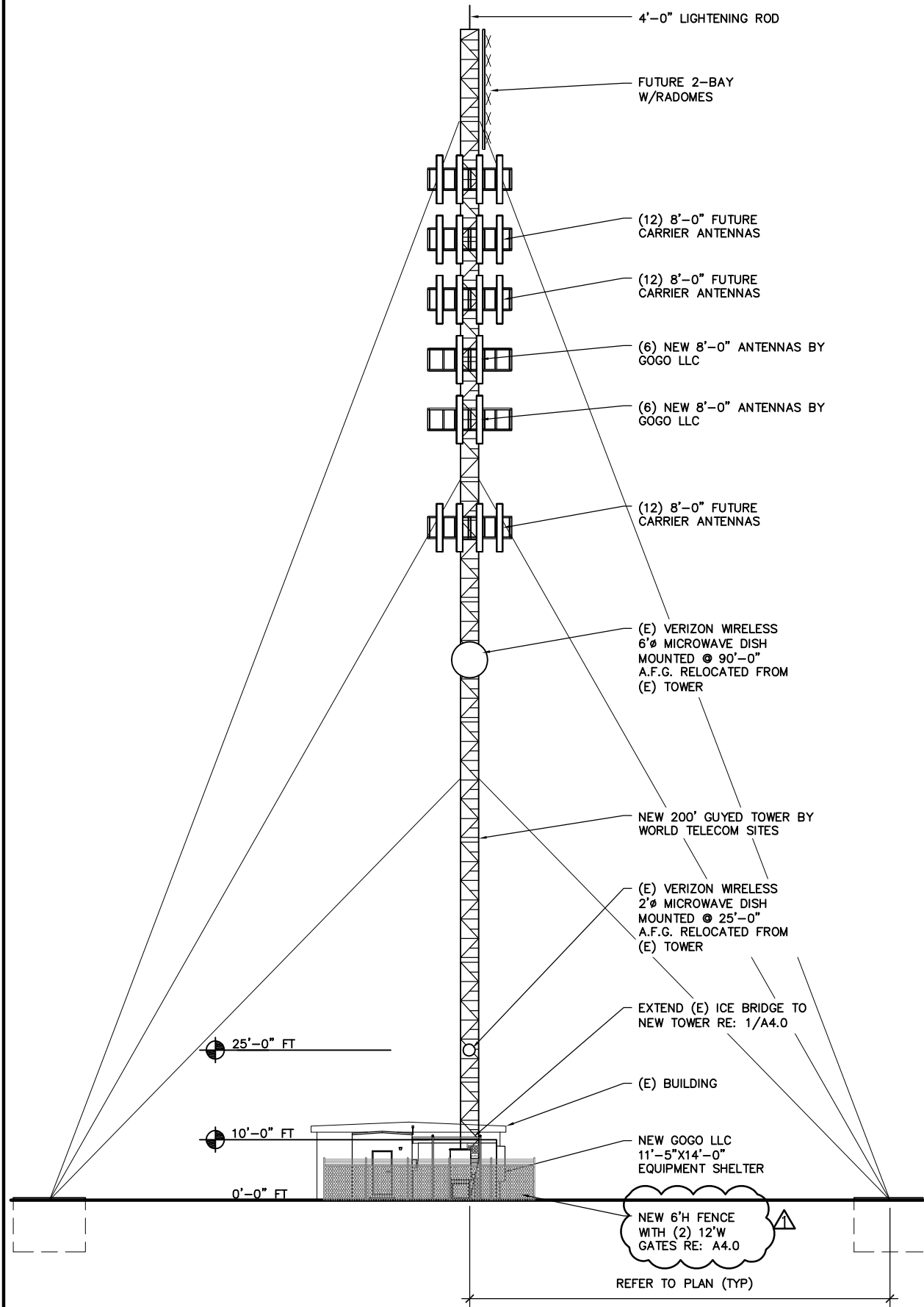
SHEET NUMBER:

A2.0

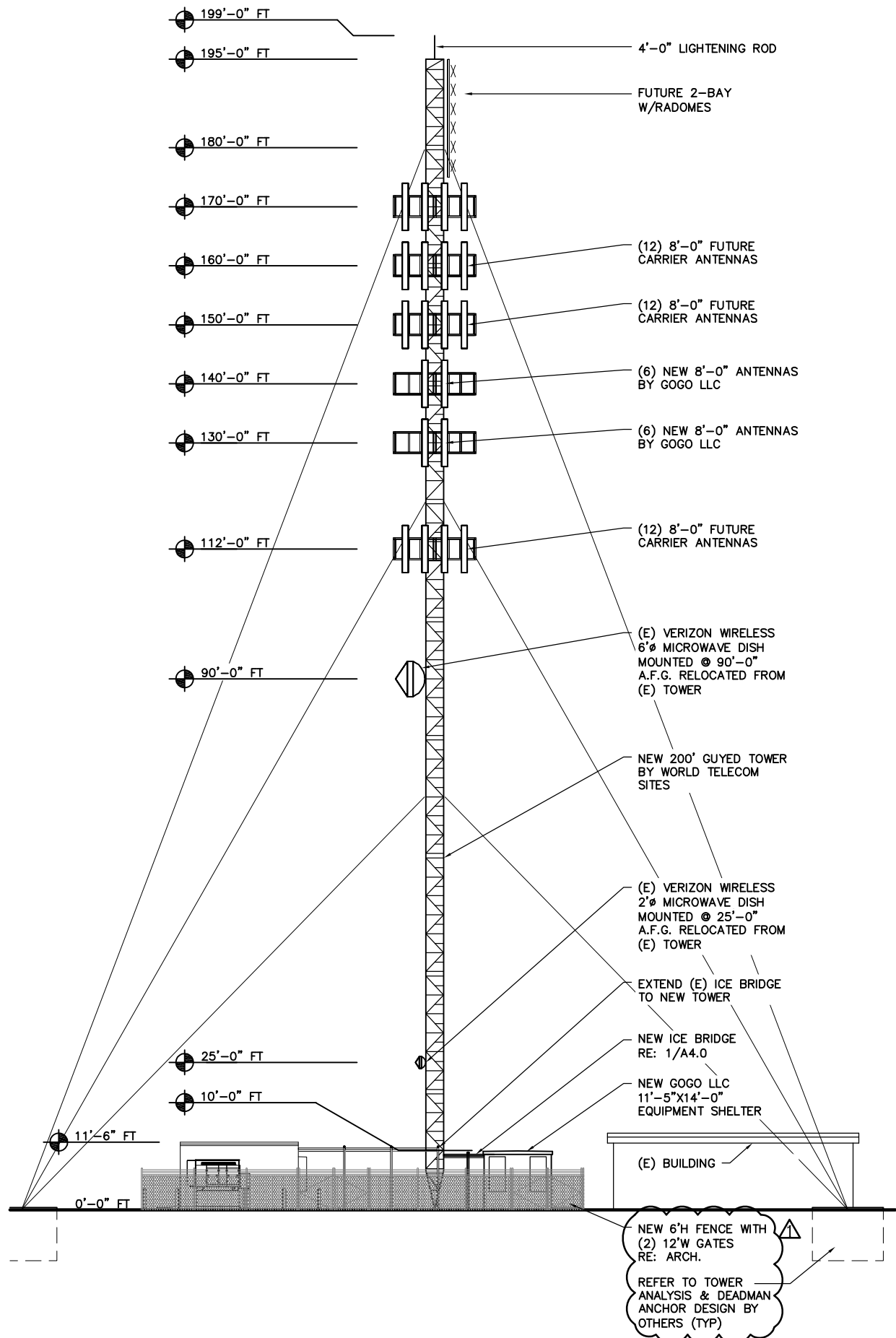
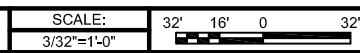


M:\2013\Projects\KVLE FM Gunnison Tower\CD\A2.0.dwg
PLOTTED Oct 11, 2013 AT 8:59am

M:\2013\Projects\KVLE FM Gunnison Tower\CDVA31.dwg
 PLOTTED Oct 11, 2013 AT 8:59am



2 PROPOSED SOUTH TOWER ELEVATION



1 PROPOSED EAST TOWER ELEVATION



World Telecom Sites

2300 5TH AVENUE, SUITE 131
VERO BEACH, FL 32960

PROJECT INFORMATION:
 SITE NAME
**GUNNISON COLORADO
 KVLE-FM
 COMMUNICATIONS TOWER**
 1445 STATE HIGHWAY 135
 GUNNISON, CO 81230

IN AIR ONLINE
 1250 N. ARLINGTON HEIGHTS RD.
 SUITE 500,
 ITASCA, IL 60143
 630.647.1400

REV:	DATE:	DESCRIPTION:	BY:
A	07/25/13	CD REVIEW	SMK
0	07/26/13	CD ISSUE	SMK
△	10/09/13	CC #1	SMK

PLANS PREPARED BY:

CHARLES STECKLY ARCHITECTURE, Inc.
 ARCHITECTURE - PLANNING - DESIGN
 5935 SOUTH ZANG STREET, SUITE 280
 LITTLETON, COLORADO 80127
 OFFICE: 303.932.9974
 FAX: 303.932.6561

LICENSURE No:

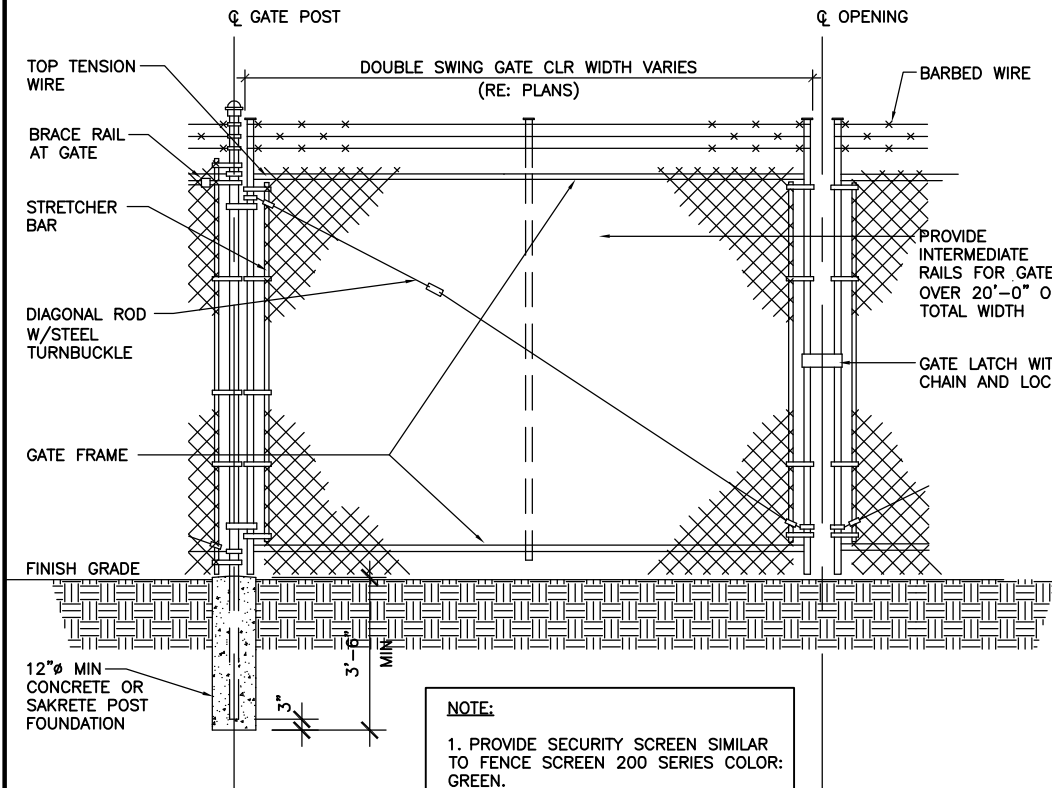
DRAWN BY:	CHK:	APV:
SMK	TN	CS

CONSULTANT:

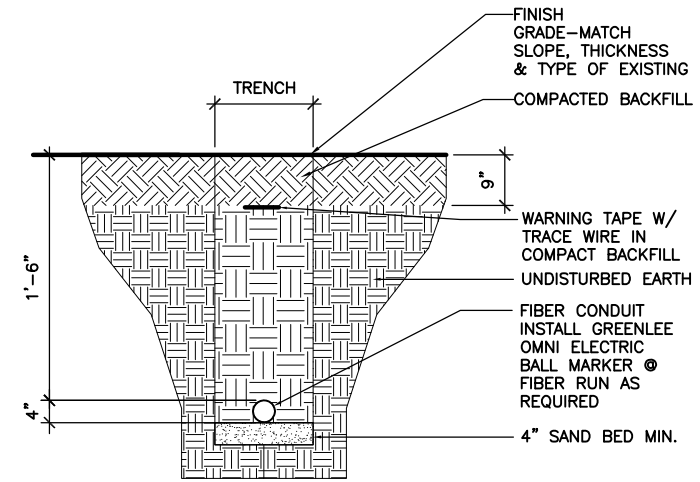
SHEET TITLE:
**PROPOSED
 TOWER
 ELEVATIONS**

SHEET NUMBER:
A3.1

- GATE POST, CORNER, TERMINAL OR PULL POST SHALL BE 2 7/8" SCHEDULE 40 FOR GATE WIDTHS UP THROUGH 6 FEET OR 12 FEET FOR DOUBLE SWING GATE PER ASTM-F1083.
- LINE POST: 2-3/8" SCHEDULE 40 PIPE PER ASTM-F1083. 4" SCHEDULE 40 AT PPC, METER AND DISC. SW.
- GATE FRAME: 1 1/2" SCHEDULE 40 PIPE PER ASTM-F1083.
- TOP RAIL & BRACE RAIL: 1 1/4" SCHEDULE 40 PIPE PER ASTM-F1083.
- FABRIC: 9 GA. CORE WIRE SIZE 2" MESH, CONFORMING TO ASTM-A392 CLASS
- TIE WIRE: MINIMUM 11 GA GALVANIZED STEEL INSTALL A SINGLE WRAP TIE WIRE AT POSTS AND RAILS AT MAX. 24" INTERVALS. INSTALL HOG RINGS ON TENSION WIRE AT 24" INTERVALS.
- TENSION WIRE: 7 GA. GALVANIZED STEEL.
- BARBED WIRE: DOUBLE STRAND 12-1/2 GAUGE TWISTED WIRE, 4 PT. BARBS SPACED ON APPROXIMATELY 5" CENTERS.
- GATE LATCH: 1-3/8" O.D. PLUNGER ROD W/ MUSHROOM TYPE CATCH AND LOCK (KEYED ALIKE FOR ALL SITES OR COMBINATION AS SPECIFIED BY CONSTRUCTION MANAGER).
- LOCAL ORDINANCE FOR BARBED WIRE PERMIT SHALL GOVERN INSTALLATION.
- HEIGHT = 6' VERTICAL.
- ALL WORK SHALL CONFORM WITH THE DESIGN AND CONSTRUCTION SPECIFICATIONS FOR FENCES.
- INSTALL FENCING PER ASTM F-567, SWING GATES PER ASTM F-900.



NOTE:
 1. PROVIDE SECURITY SCREEN SIMILAR TO FENCE SCREEN 200 SERIES COLOR: GREEN.
 2. RE: 6/A4.0 FOR GENERAL NOTES.



- NOTES:**
- INSTALL ALL UNDERGROUND UTILITIES PER LOCAL UTILITY REQUIREMENTS.
 - LOCATE ALL UNDERGROUND UTILITIES PRIOR TO TRENCHING / EXCAVATION.
 - COORDINATE SIZE AND TYPE WITH LOCAL UTILITY COMPANIES REQUIREMENTS.
 - REFER TO ELECT PLAN FOR EXACT SIZE AND LOCATION.
 - COMPACT BACKFILL TO 95% PROCTOR DENSITY AT ALL DRIVEWAY OR HARD SURFACED AREAS. COMPACT TO 90% PROCTOR DENSITY ALL OTHER AREAS UNLESS NOTED OTHERWISE. REFER TO GEOTECHNICAL REPORT.
 - BACKFILL AND SAND BED NOT REQ'D WHEN BORING.

6 GENERAL FENCE NOTES

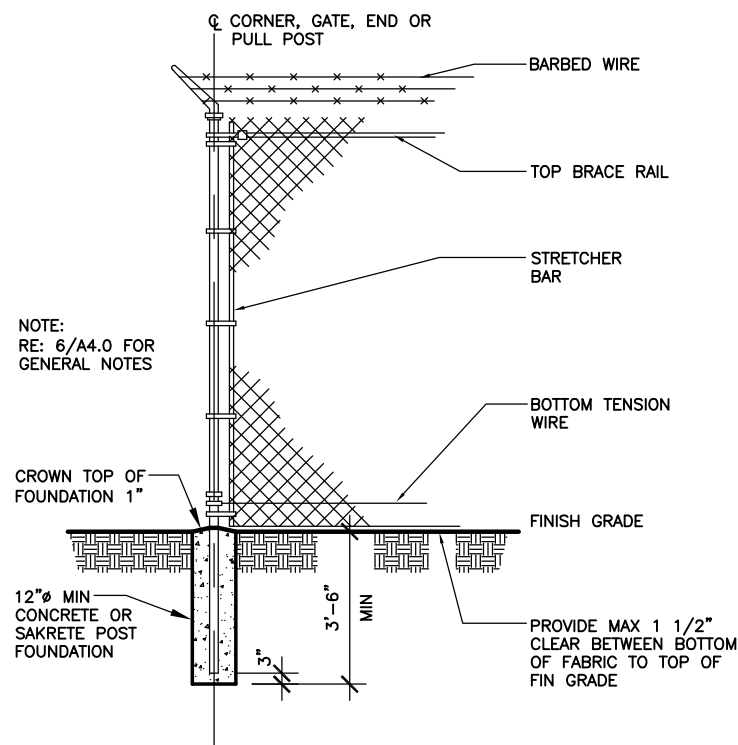
SCALE: N.T.S.

4 GATE DETAIL

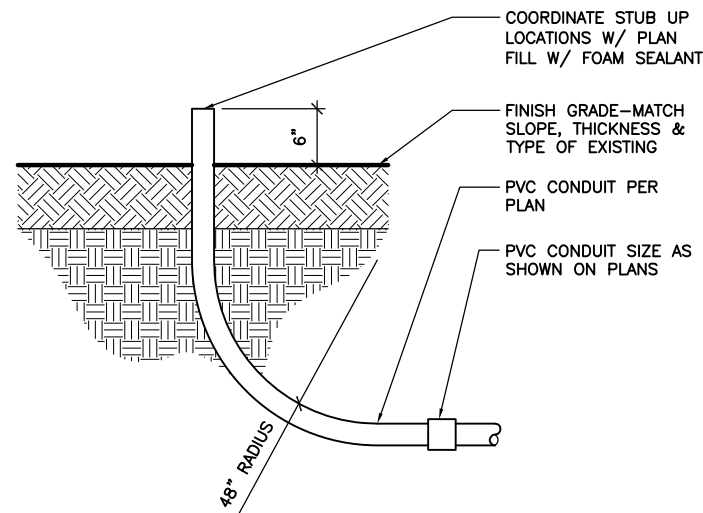
SCALE: N.T.S.

2 TRENCH DETAIL

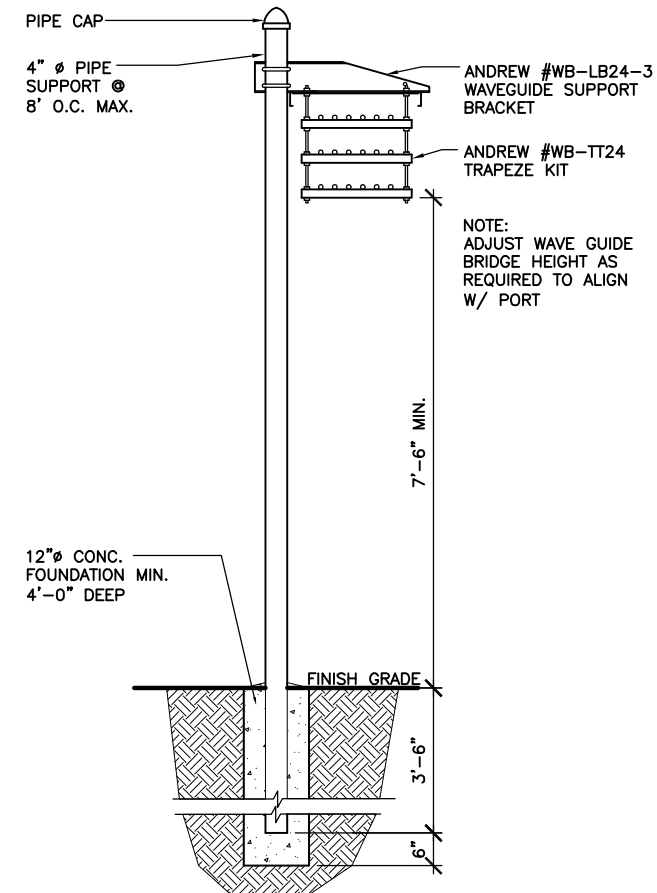
SCALE: N.T.S.



NOTE:
 RE: 6/A4.0 FOR GENERAL NOTES



NOTE:
 INSTALL 200# TENSILE PULL WIRE (TRUE-TAPE) CALIBRATED IN FEET INSIDE EMPTY CONDUITS & TIE OFF AT EACH END.



5 FENCE DETAIL

SCALE: N.T.S.

3 CONDUIT DETAIL

SCALE: N.T.S.

1 ICE BRIDGE DETAIL

SCALE: N.T.S.

World Telecom Sites

2300 5TH AVENUE, SUITE 131
 VERO BEACH, FL 32960

PROJECT INFORMATION:

SITE NAME
**GUNNISON COLORADO
 KVLE-FM
 COMMUNICATIONS TOWER**
 1445 STATE HIGHWAY 135
 GUNNISON, CO 81230



1250 N. ARLINGTON HEIGHTS RD.
 SUITE 500,
 ITASCA, IL 60143
 630.647.1400

REV:	DATE:	DESCRIPTION:	BY:
A	07/25/13	CD REVIEW	SMK
0	07/26/13	CD ISSUE	SMK
△	10/09/13	CC #1	SMK

PLANS PREPARED BY:

CSAi

CHARLES STECKLY ARCHITECTURE, Inc.
 ARCHITECTURE - PLANNING - DESIGN
 5935 SOUTH ZANG STREET, SUITE 280
 LITTLETON, COLORADO 80127
 OFFICE: 303.932.9974
 FAX: 303.932.6561

LICENSURE No:

DRAWN BY:	CHK:	APV:
SMK	TN	CS

CONSULTANT:

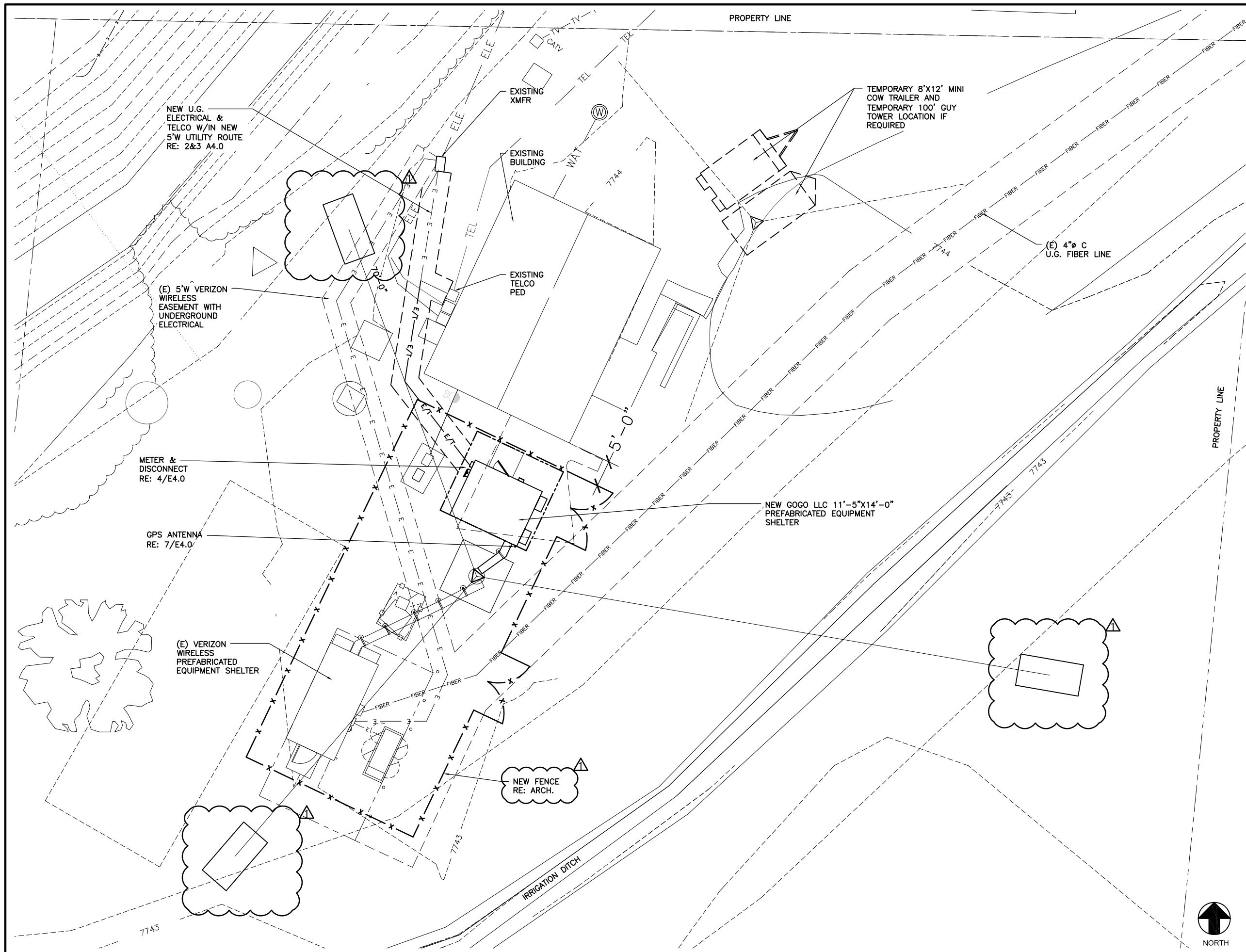
SHEET TITLE:

DETAILS

SHEET NUMBER:

A4.0

M:\2013\Projects\KYLE FM Gunnison Tower\CD\E2.0.dwg
PLOTTED Oct 11, 2013 AT 8:59am




World Telecom Sites

2300 5TH AVENUE, SUITE 131
VERO BEACH, FL 32960

PROJECT INFORMATION:

SITE NAME
**GUNNISON COLORADO
KVLE-FM
COMMUNICATIONS TOWER**
1445 STATE HIGHWAY 135
GUNNISON, CO 81230




gogo IN AIR ONLINE

1250 N. ARLINGTON HEIGHTS RD.
SUITE 500,
ITASCA, IL 60143
630.647.1400

REV:	DATE:	DESCRIPTION:	BY:
A	07/25/13	CD REVIEW	SMK
0	07/26/13	CD ISSUE	SMK
△	10/09/13	CC #1	SMK

PLANS PREPARED BY:



CSAi
CHARLES STECKLY ARCHITECTURE, Inc.
ARCHITECTURE - PLANNING - DESIGN
5935 SOUTH ZANG STREET, SUITE 280
LITTLETON, COLORADO 80127
OFFICE: 303.932.9974
FAX: 303.932.6561

LICENSURE No:

DRAWN BY:	CHK:	APV:
SMK	TN	CS

CONSULTANT:

DENNIS GREVEL, P.E.
12311 WEST PRENTICE PLACE
LITTLETON, COLORADO 80127
PHONE: 303.478.3337

SHEET TITLE:

**ELECTRICAL
SITE PLAN**

SHEET NUMBER:

E2.0

